



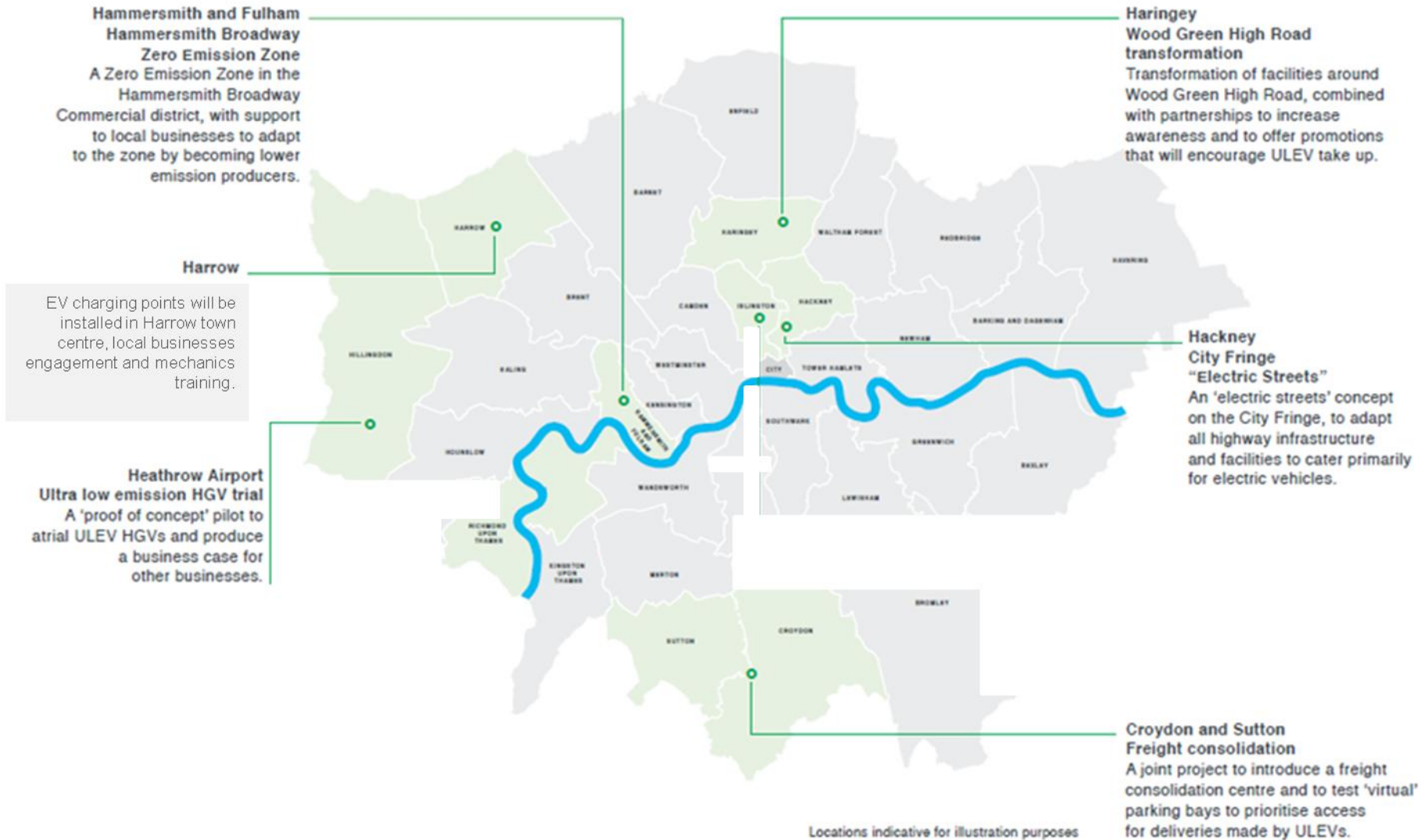
Wood Green Neighbourhood of the Future

Creating a step change in
electric vehicles and delivering
air quality improvements

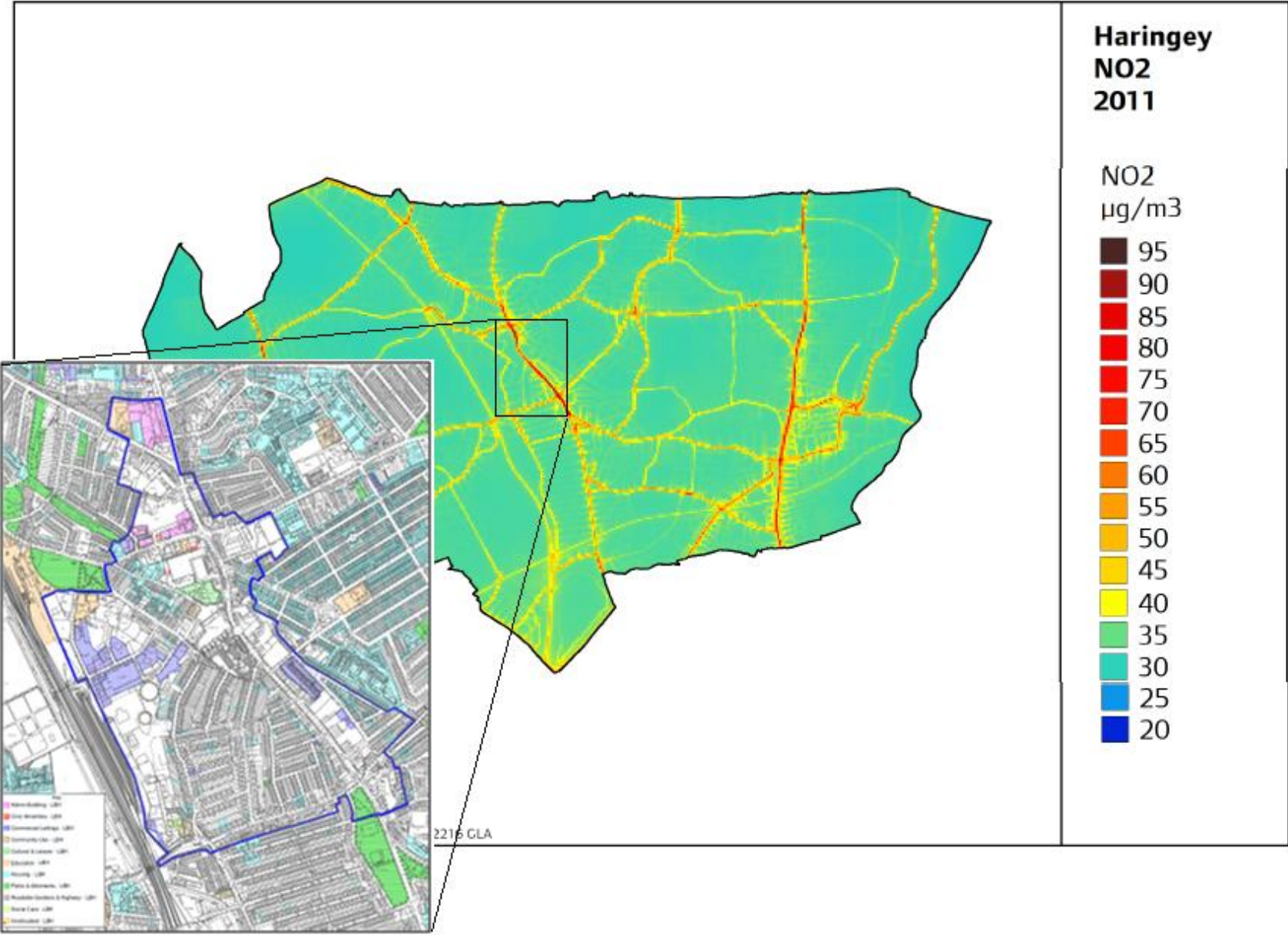
NoFs

- Neighbourhoods of the Future' forms a part of the London's £13 million Go Ultra Low Cities scheme
- Aim:- to give Londoners the confidence to switch to environmental friendly vehicles
 - to test technology that reduces pollution
 - to work with businesses to bring new technology to market faster
- Total funding £2.5m
- Six innovative schemes, spanning nine boroughs

NoFs



The Wood Green NoF



Rapid Taxi Rank

- Aim for London to create the world's first electric taxi fleet
- Need for rapid recharging points across London
- In areas where taxis operate and stop



Planning Guidance

- To update and increase the 20% requirement
 - To address shopping
 - Private Car parking
 - On Street
 - Car club contributions
 - Address standard and rapid requirements
 - CIL / S106 issues

Business Engagement

- Business engagement
 - SME
 - Large
 - Support vehicles and contractors
 - Electric bikes
- Fleet needs / expectations / desires
- Trials
- Bespoke options appraisal
- Purchase agreements
- Grants and tax benefits
- Possible link to other business engagement activities

Electric vehicles trials

- A number of electric vehicles for residents, business, user trails.
- Existing schemes in Hackney / Islington / Westminster
- Trials to Driving Instructors and free driving lessons to newly qualified drivers
- Comms and Events



Electric Car Clubs

- New bays to be electric
- Electrifying existing bays
- Specify electric vehicles in the car club procurement
- Year's free membership for residents

Zipcar to bring 50 electric vehicles to London

09.06.2016

NEWS

LEWIS DEAKIN

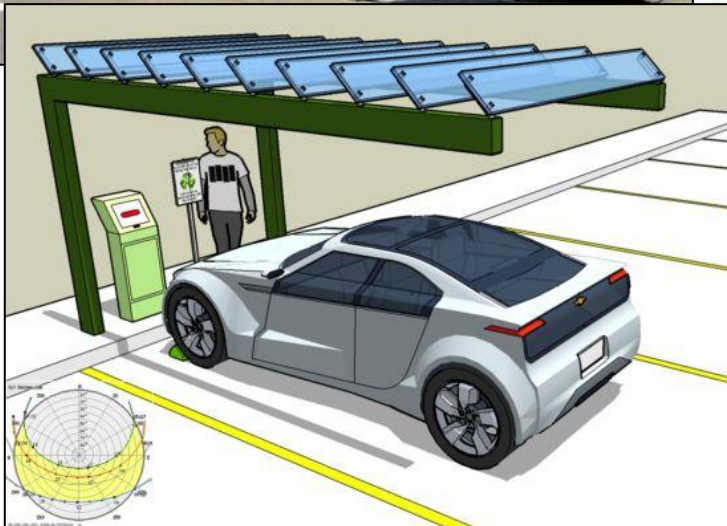
Car-sharing service Zipcar is partnering with Westminster city council to bring fifty Volkswagen Golf GTE plug-in hybrid electric cars to its members in London.

Westminster will receive 40 cars and 10 additional cars are to be sent elsewhere in London, such as Tower Bridge and Old Oak.

Parking charges

- Currently most parking in London is based on carbon
- To review Air quality and Carbon emissions of vehicles
- To recommend a parking charge based on this

Physical Regeneration Project



TIMELINE (TO BE CONFIRMED)

2017/18

- ALL ENGAGEMENT PROGRAMMES LAUNCHED
- PLANNING GUIDANCE DOCUMENTATION PRODUCED
- REVIEW OF CO2 AND AIR QUALITY VEHICLE EMISSIONS

2018/19

- CAR CLUB ELECTRIFICATION
- ON-GOING ENGAGEMENT

2019/20

- RAPID TAXI RANK INSTALLED
- SOLAR REGENERATION INSTALLATION

QUESTIONS